

PRE-PRINTED AND WRITE-ON MARKERS

PANDUIT offers a variety of pre-printed and write-on marker solutions in multiple formats to meet your specific requirements.



Marker books are a convenient pocket sized method to identify many electrical and network components

Marker cards are available in a variety of legends and combination packs

Dispensers are available in both pre-printed and write-on formats for quick identification of wire/cable

Clip-on markers provide a fast, convenient, non-adhesive method to identify wire/cable

PANDUIT offers a variety of innovative books, cards, clip-ons and dispensers to provide you with the wire/cable label that best fits your needs.

Bundle Route/Protect Identify
 Terminate

A. System Overview

B1. Cable Ties

B2. Cable Accessories

B3. Stainless Steel

C1. Wiring Duct

C2. Surface Raceway

C3. Abrasion Protection

C4. Cable Management

D1. Terminals

D2. Power & Grounding Connectors

E1. Labeling System

E2. Labels

E3. Pre-Printed & Write-On Markers

E4. Lockout/Tagout & Safety Solutions

F. Index

A. System Overview

Pre-Printed Marker Books

B1. Cable Ties

- Convenient, pocket-sized book
- Markers are perforated and can be torn in half to mark both ends of conductors
- Terminal block markers are included to properly identify connectors
- 10 pages of markers per book

B2. Cable Accessories

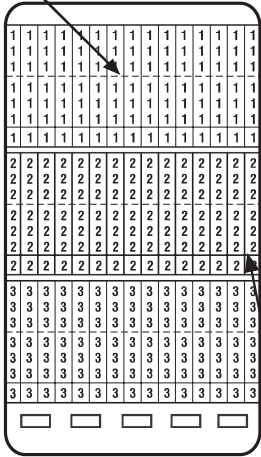


B3. Stainless Steel

C1. Wiring Duct

C2. Surface Raceway

Perforation for half marker



Terminal Block Marker

C3. Abrasion Protection

C4. Cable Management

D1. Terminals

D2. Power & Grounding Connectors

E1. Labeling System

E2. Labels

E3. Pre-Printed & Write-On Markers

E4. Lockout/Tagout & Safety Solutions

F. Index

Material Chart

Material	Print Method	Temperature Range	Features
Vinyl Cloth, White	Pre-Printed	-50°F to 170°F (-46°C to 77°C)	Indoor/outdoor rated; thin conformable material with repositionable adhesive allows label to be removed and reused or used in temporary applications; provides durability, high temperature resistance and dimensional stability for rough or textured surfaces; resists oil and abrasion.

Part Number	Legend	Total Markers Each Legend	Std. Pkg. Book(s)	Std. Ctn. Book(s)
PCMB-1	0 thru 9	45	1	10
PCMB-2	A thru Z, 0 thru 15, +, -, /	10	1	10
PCMB-3	1 thru 45	10	1	10
PCMB-4	1, 2, 3	150	1	10
PCMB-5	A, B, C	150	1	10
PCMB-6	T1, T2, T3	150	1	10
PCMB-7	L1, L2, L3	150	1	10
PCMB-8	1 thru 15 16 thru 90 A thru Z, +, -, /, 0	6 4 2	1	10
PCMB-9	1, 2, 3, A, B, C L1, L2, L3, T1, T2, T3	45 30	1	10
PCMB-10	Solid NEMA colors red, yellow, white, light blue, light green, black, brown, orange, gray, dark green	45	1	10
PCMB-11	1 thru 30	15	1	10
PCMB-12	A thru Z + - Blank (write-on)	15 8 7 21	1	10
PCMB-13	+, -, AC, DC POS, NEG, GND NEUT SPARE, Blank (write-on)	45 33 27 21	1	10
PCMB-14	46 thru 90	10	1	10
PCMB-15	0 thru 45, +, -	10	1	10
PCMB-16	0 thru 33, A, B, C, +, -, L1, L2, L3, T1, T2, T3	10	1	10
PCMB-25	0 thru 9 L1, L2, L3, T1, T2, T3	45 15	1	10

Legend: Black Background: White

Marker sizes:

Full size marker – .22" x 1.38" (5.60mm x 34.90mm). Maximum wire O.D. .38" (9.50mm)

Half size marker – .22" x .69" (5.60mm x 17.40mm). Maximum wire O.D. .19" (4.70mm)

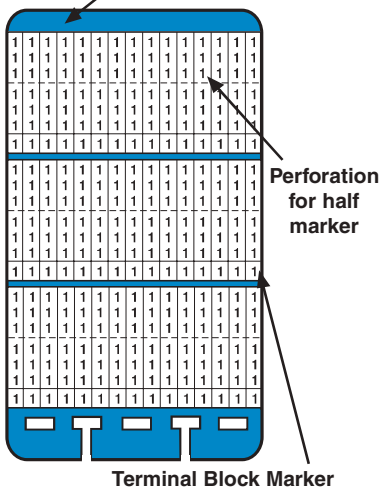
Terminal block marker – .22" x .25" (5.60mm x 6.30mm)

Pre-Printed Marker Book Replacement Pages

- Replacement pages can be placed into a typical “roll-over” index card holder or added to standard pre-printed marker books
- Sturdy rigid liner keeps pages standing up in index card holder
- 10 pages of markers per bag



Sturdy rigid liner stands up firmly index card holder



Part Number	Legend	Total Markers Each Legend	Std. Pkg. Page(s)	Std. Ctn. Page(s)
PCMBR-0	0	450	1	10
PCMBR-1	1	450	1	10
PCMBR-2	2	450	1	10
PCMBR-3	3	450	1	10
PCMBR-4	4	450	1	10
PCMBR-5	5	450	1	10
PCMBR-6	6	450	1	10
PCMBR-7	7	450	1	10
PCMBR-8	8	450	1	10
PCMBR-9	9	450	1	10
PCMBR-10	10	450	1	10
PCMBR-0-9	0 thru 9	45	1	10
PCMBR-10-19	10 thru 19	45	1	10
PCMBR-20-29	20 thru 29	45	1	10
PCMBR-A-Z	A thru Z, /, +, -, 0 thru 15	10	1	10
PCMBR-L1-L3	L1, L2, L3	150	1	10
PCMBR-T1-T3	T1, T2, T3	150	1	10

Legend: Black Background: White

Marker sizes:

Full size marker – .22" x 1.38" (5.60mm x 34.90mm). Maximum wire O.D. .38" (9.50mm)

Half size marker – .22" x .69" (5.60mm x 17.40mm). Maximum wire O.D. .19" (4.70mm)

Terminal block marker – .22" x .25" (5.60mm x 6.30mm)

A. System Overview

B1. Cable Ties

B2. Cable Accessories

B3. Stainless Steel

C1. Wiring Duct

C2. Surface Raceway

C3. Abrasion Protection

C4. Cable Management

D1. Terminals

D2. Power & Grounding Connectors

E1. Labeling System

E2. Labels

E3. Pre-Printed & Write-On Markers

E4. Lockout/Tagout & Safety Solutions

F. Index

A. System Overview

Write-On Markers Books – Self-Laminating

B1. Cable Ties

- Clear section of marker over laminates and protects printed legend
- 10 pages of markers per book
- Markers have ink receptive area to allow handwritten legends

B2. Cable Accessories

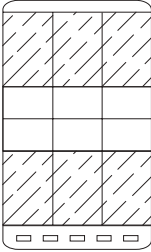


B3. Stainless Steel

Material Chart

Material	Print Method	Temperature Range	Features
Self-Laminating Vinyl, White Print-On	Pre-Printed	-40°F to 150°F (-40°C to 66°C)	Indoor/outdoor rated; thin and conformable; preferred material for most general wire/cable labeling.

C1. Wiring Duct



C2. Surface Raceway

C3. Abrasion Protection

C4. Cable Management

D1. Terminals

D2. Power & Grounding Connectors

E1. Labeling System

E2. Labels

E3. Pre-Printed & Write-On Markers

E4. Lockout/Tagout & Safety Solutions

F. Index

Part Number	Width		Length		Print-On Height		Min. Cable O.D.		Max. Cable O.D.		Markers Per Book	Std. Pkg. Book(s)	Std. Ctn. Book(s)
	In.	mm	In.	mm	In.	mm	In.	mm	In.	mm			
PSCB-12Y	.50	12.70	1.50	38.10	.63	38.10	.20	5.08	.28	7.11	180	1	10
PSCB-3Y*	1.00	25.40	3.00	76.20	.75	19.05	.24	6.10	.72	18.29	60	1	10
PSCB-5Y	1.00	25.40	5.00	127.00	1.00	25.40	.32	8.13	1.27	32.26	30	1	10
PSCB-6Y	1.00	25.40	6.00	152.40	1.00	25.40	.32	8.13	1.59	40.39	30	1	10
PSCB-13Y	1.50	38.10	3.00	76.20	.75	19.05	.24	6.10	.72	18.29	40	1	10
PSCB-16Y	1.50	38.10	6.00	152.40	1.00	25.40	.32	8.13	1.59	40.39	20	1	10

*Parts shown are white. Other colors available, add GR for green or YL for yellow to the end of the part number. Can be clearly identified with **PANDUIT** permanent marking pens, [page B1.48](#).

Pre-Printed Marker Cards PCM Type

- Marker cards printed in a variety of legends allows “kitting” for project builds

- Plastic liner provides easy removal of markers while protecting unused markers

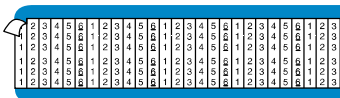


Material Chart

Material	Print Method	Temperature Range	Features
Vinyl Cloth, White	Pre-Printed	-50°F to 170°F (-46°C to 77°C)	Indoor/outdoor rated; thin conformable material with repositionable adhesive allows label to be removed and reused or used in temporary applications; provides durability, high temperature resistance and dimensional stability for rough or textured surfaces; resists oil and abrasion



PCM-7



PCM-1-6



PCM-A1

Part Number	Legend	Width		Length		Markers Per Card	Std. Pkg. Card(s)	Std. Ctn. Card(s)
		In.	mm	In.	mm			
PCM-0	0							
thru	thru	.25	6.40	1.50	38.10	36	25	100
PCM-99	99							
PCM-100	100							
thru	thru	.36	9.10	1.50	38.10	25	25	100
PCM-202	202							
PCMH-0	0							
thru	thru	.25	6.40	1.50	38.10	72	25	100
PCMH-25	25							
PCM-1-3	1 thru 3	.25	6.40	1.50	38.10	36	25	100
PCM-1-4	1 thru 4	.25	6.40	1.50	38.10		25	100
PCM-1-5	1 2 thru 5	.25	6.40	1.50	38.10		25	100
PCM-1-6	1 thru 6	.25	6.40	1.50	38.10		25	100
PCM-1-8	1 thru 4 5 thru 8	.25	6.40	1.50	38.10		25	100
PCM-1-9	1 thru 9	.25	6.40	1.50	38.10		25	100
PCM-0-9	0 thru 5 6 thru 9	.25	6.40	1.50	38.10		25	100
PCM-1-10	1 thru 3 4 thru 10	.25	6.40	1.50	38.10		25	100
PCM-1-12	1 thru 12	.25	6.40	1.50	38.10		25	100
PCM-1-16	1 thru 4 5 thru 16	.25	6.40	1.50	38.10		25	100
PCM-1-18	1 thru 18	.25	6.40	1.50	38.10	25	100	
PCM-19-36	19 thru 36	.25	6.40	1.50	38.10	25	100	
PCM-1-33	1 thru 33	.25	6.40	1.50	38.10	33	25	100
PCM-34-66	34 thru 66	.25	6.40	1.50	38.10		25	100
PCM-67-99	67 thru 99	.25	6.40	1.50	38.10		25	100
PCM-100-124	100 thru 124	.36	9.10	1.50	38.10	25	25	100
PCM-125-149	125 thru 149	.36	9.10	1.50	38.10		25	100
PCM-150-174	150 thru 174	.36	9.10	1.50	38.10		25	100
PCM-175-199	175 thru 199	.36	9.10	1.50	38.10		25	100

A. System Overview

B1. Cable Ties

B2. Cable Accessories

B3. Stainless Steel

C1. Wiring Duct

C2. Surface Raceway

C3. Abrasion Protection

C4. Cable Management

D1. Terminals

D2. Power & Grounding Connectors

E1. Labeling System

E2. Labels

E3. Pre-Printed & Write-On Markers

E4. Lockout/Tagout & Safety Solutions

F. Index

A. System Overview

Pre-Printed Marker Cards (continued)

PCM Type

B1. Cable Ties



PCM-A

B3. Stainless Steel



PCM-A-Z

C1. Wiring Duct



PCM-A1

C2. Surface Raceway

C3. Abrasion Protection

C4. Cable Management

D1. Terminals

D2. Power & Grounding Connectors

E1. Labeling System

E2. Labels

E3. Pre-Printed & Write-On Markers

E4. Lockout/Tagout & Safety Solutions

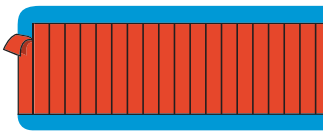
F. Index

Part Number	Legend	Width		Length		Markers Per Card	Std. Pkg. Card(s)	Std. Ctn. Card(s)
		In.	mm	In.	mm			
PCM-A thru PCM-Z	A thru Z	.25	6.40	1.50	38.10	36	25	100
PCM-A-Z	A thru J K thru Z	.25	6.40	1.50	38.10		25	100
PCM-A-Z-0-9	A thru Z 0 thru 9	.25	6.40	1.50	38.10		25	100
PCM-A1 thru PCM-A4	A1 thru A4	.25	6.40	1.50	38.10		25	100
PCM-B1 thru PCM-B5	B1 thru B5	.25	6.40	1.50	38.10		25	100
PCM-C1 thru PCM-C4	C1 thru C4	.25	6.40	1.50	38.10		25	100
PCM-E1 thru PCM-E3	E1 thru E3	.25	6.40	1.50	38.10		25	100
PCM-F1 thru PCM-F4	F1 thru F4	.25	6.40	1.50	38.10		25	100
PCM-H1 thru PCM-H5	H1 thru H5	.25	6.40	1.50	38.10		25	100
PCM-L1 thru PCM-L5	L1 thru L5	.25	6.40	1.50	38.10		25	100
PCM-M1 thru PCM-M2	M1 thru M2	.25	6.40	1.50	38.10		25	100
PCM-P1 thru PCM-P3	P1 thru P3	.25	6.40	1.50	38.10		25	100
PCM-R1 thru PCM-R5	R1 thru R5	.25	6.40	1.50	38.10		25	100
PCM-S1 thru PCM-S5	S1 thru S5	.25	6.40	1.50	38.10		25	100
PCM-T1 thru PCM-T9	T1 thru T9	.25	6.40	1.50	38.10		25	100
PCM-X1 thru PCM-X4	X1 thru X4	.25	6.40	1.50	38.10		25	100

Pre-Printed Marker Cards (continued) PCM Type

Material Chart

Material	Print Method	Temperature Range	Features
Vinyl Cloth, White	Pre-Printed	-50°F to 170°F (-46°C to 77°C)	Indoor/outdoor rated; thin conformable material with repositionable adhesive allows label to be removed and reused or used in temporary applications; provides durability, high temperature resistance and dimensional stability for rough or textured surfaces.



Part Number	Color	Width		Length		Markers Per Card	Std. Pkg. Card(s)	Std. Ctn. Card(s)
		In.	mm	In.	mm			
PCM-BLK	Black	.25	6.40	1.50	38.10	36	25	100
PCM-BRN	Brown	.25	6.40	1.50	38.10		25	100
PCM-DBL	Dark Blue	.25	6.40	1.50	38.10		25	100
PCM-DGN	Dark Green	.25	6.40	1.50	38.10		25	100
PCM-GRY	Gray	.25	6.40	1.50	38.10		25	100
PCM-LBL	Light Blue	.25	6.40	1.50	38.10		25	100
PCM-LGN	Light Green	.25	6.40	1.50	38.10		25	100
PCM-ORN	Orange	.25	6.40	1.50	38.10		25	100
PCM-PNK	Pink	.25	6.40	1.50	38.10		25	100
PCM-PUR	Purple	.25	6.40	1.50	38.10		25	100
PCM-RED	Red	.25	6.40	1.50	38.10		25	100
PCM-TAN	Tan	.25	6.40	1.50	38.10		25	100
PCM-WHT	White	.25	6.40	1.50	38.10		25	100
PCM-YEL	Yellow	.25	6.40	1.50	38.10		25	100

Marker size:

Full size marker – 1.50" (38.10mm). Maximum wire O.D. .38" (9.50mm)

A. System Overview

B1. Cable Ties

B2. Cable Accessories

B3. Stainless Steel

C1. Wiring Duct

C2. Surface Raceway

C3. Abrasion Protection

C4. Cable Management

D1. Terminals

D2. Power & Grounding Connectors

E1. Labeling System

E2. Labels

E3. Pre-Printed & Write-On Markers

E4. Lockout/Tagout & Safety Solutions

F. Index

A. System Overview

B1. Cable Ties

B2. Cable Accessories

B3. Stainless Steel

C1. Wiring Duct

C2. Surface Raceway

C3. Abrasion Protection

C4. Cable Management

D1. Terminals

D2. Power & Grounding Connectors

E1. Labeling System

E2. Labels

E3. Pre-Printed & Write-On Markers

E4. Lockout/Tagout & Safety Solutions

F. Index

Combination Packs PCM Type



Numbers



Letters

Part Number	Legend	Cards Per Legend	Markers Per Card	Std. Pkg. Qty.	Std. Ctn. Qty.
PCMCP-1-25*	1 thru 25	1 each	36	1	4
PCMCP-26-50*	26 thru 50	1 each		1	4
PCMCP-51-75*	51 thru 75	1 each		1	4
PCMCP-76-100*	76 thru 100	1 each		1	4
PCMCP-101-125*	101 thru 125	1 each	25	1	4
PCMCP-126-150*	126 thru 150	1 each		1	4
PCMCP-A-Z**	A thru Z	1 each		36	1

Marker size:

Full size marker – 1.50" (38.10mm). Maximum wire O.D. .38" (9.50mm)

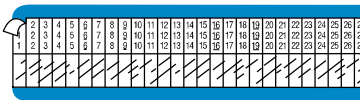
*One card each number, 6 cards per package.

**One card each letter, 26 cards per package.

Pre-Printed Marker Cards PSM Type



PSM-7



PSM-1-33



PSM-W

Material Chart

Material	Print Method	Temperature Range	Features
Self-Laminating Vinyl, White Print-On	Pre-Printed	-40°F to 150°F (-40°C to 66°C)	Indoor/outdoor rated; thin and conformable; preferred material for most general wire/cable labeling.

Part Number	Legend	Width		Length		Markers Per Card	Std. Pkg. Card(s)	Std. Ctn. Card(s)
		In.	mm	In.	mm			
PSM-0-Y thru PSM-52-Y	0 thru 52	.25	6.40	.75	19.10	36	25	100
PSM-0-9-Y	0 thru 9	.25	6.40	.75	19.10			
PSM-1-33-Y	1 thru 33	.25	6.40	.75	19.10	33	25	100
PSM-34-66-Y	34 thru 66	.25	6.40	.75	19.10			
PSM-67-99-Y	67 thru 99	.25	6.40	.75	19.10			
PSM-A-Y thru PSM-Z-Y	A thru Z	.25	6.40	.75	19.10	36	25	100
PSM-A-Z-Y	A thru Z	.25	6.40	.75	19.10			

Legend: Black Background: White
 Marker sizes:
 Full size marker – 1.50" (38.10mm). Maximum wire O.D. .38" (9.50mm)
 Half size marker – .75" (19.10mm). Maximum wire O.D. .19" (4.70mm)

Pre-Printed Marker Cards PPM Type



PPM-7



PPM-1-33



PPM-A

Material Chart

Material	Print Method	Temperature Range	Features
Tedlar†, White	Pre-Printed	-40°F to 275°F (-40°C to 135°C)	Indoor/outdoor rated; self-extinguishing; ideal for component labeling in harsh environments.

†Tedlar is a registered trademark of E.I. du Pont de Nemours and Company.

Part Number	Legend	Width		Length		Markers Per Card	Std. Pkg. Card(s)	Std. Ctn. Card(s)
		In.	mm	In.	mm			
PPM-0 thru PPM-25	0 thru 25	.25	6.40	1.50	38.10	36	25	100
PPM-1-33	1 thru 33	.25	6.40	1.50	38.10			
PPM-A thru PPM-C	A thru C	.25	6.40	1.50	38.10	36	25	100

Legend: Black Background: White
 Marker sizes:
 Half size marker – 1.50" (38.10mm). Maximum wire O.D. .38" (9.50mm)

A. System Overview

B1. Cable Ties

B2. Cable Accessories

B3. Stainless Steel

C1. Wiring Duct

C2. Surface Raceway

C3. Abrasion Protection

C4. Cable Management

D1. Terminals

D2. Power & Grounding Connectors

E1. Labeling System

E2. Labels

E3. Pre-Printed & Write-On Markers

E4. Lockout/Tagout & Safety Solutions

F. Index

A. System Overview

Write-On Marker Cards – Self-Laminating

B1. Cable Ties

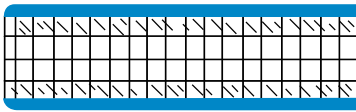
- Clear section of marker overlaminates and protects write-on legend
- Markers have ink receptive area to allow hand-written legends

B2. Cable Accessories

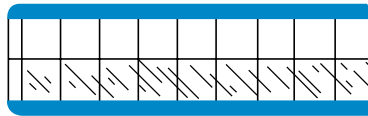


B3. Stainless Steel

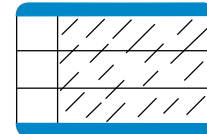
C1. Wiring Duct



Type PSWMH



Type PSWM



Type PSCC

C2. Surface Raceway

Part Number	Width		Length		Print-On Height		Min. Cable O.D.		Max. Cable O.D.		Markers Per Card	Std. Pkg. Card(s)	Std. Ctn. Card(s)
	In.	mm	In.	mm	In.	mm	In.	mm	In.	mm			
PSCC-3Y	1.00	25.40	3.00	76.20	.75	19.10	.24	6.06	.72	18.19	3	25	100
PSCC-5Y	1.00	25.40	5.00	127.00	1.00	25.40	.32	8.09	1.27	32.34	3	25	100
PSWMH-375Y	.38	9.50	.75	19.10	.38	9.50	.12	3.07	.12	2.99	50	25	100
PSWM-375Y	.38	9.50	1.5	38.10	.75	19.10	.24	6.06	.24	6.06	25	25	100
PSWM-750Y	.75	19.10	1.5	38.10	.75	19.10	.24	6.06	.24	6.06	12	25	100
PSWMH-750Y	.75	19.10	.75	19.10	.38	9.50	.12	3.07	.12	2.99	24	25	100
PSWM-1500Y	1.5	38.10	1.5	38.10	.75	19.10	.24	6.06	.24	6.06	6	25	100

Can be clearly identified with *PANDUIT* permanent marking pens shown on [page B1.48](#).

D1. Terminals

Pre-Printed Marker Tape Dispenser

D2. Power & Grounding Connectors

- Flexible polyester marker tape conforms tightly to wires/cables
- Dispenser allows marker tape to be cut to the exact length required for marking any size wire/cable
- Durable plastic dispenser can be attached to toolbelt for industrial use

E1. Labeling System



E2. Labels

E3. Pre-Printed & Write-On Markers



E4. Lockout/Tagout & Safety Solutions

F. Index

Material Chart

Material	Print Method	Temperature Range	Features
Polyester, White	Pre-Printed	-40°F to 250°F (-40°C to 121°C)	Indoor/outdoor rated; laminated label material protects legend from abrasion and chemicals; resistant to UV light chemical atmosphere and abrasion; excellent life and adhesion properties.

Part Number	Part Description	Roll		Rolls Per Legend Per Pkg.	Std. Pkg. Qty.	Std. Ctn. Qty.
		ft	M			
PMD	Empty dispenser	—	—	—	1	10
PMD-0-9	Dispenser filled with one roll each legend 0 thru 9	8.0	2.4	1	1	10
PMD-NEMA	Dispenser filled with one roll each of solid NEMA colors: black, light blue, brown, gray, light green, orange, purple, red, white and yellow	8.0	2.4	1	1	10

Pre-Printed Marker Tape Refills



Part Number	Legend	Roll Length		Rolls Per Legend Per Pkg.	Std. Pkg. Roll(s)	Std. Ctn. Roll(s)			
		ft	M						
PMDR-0-9 thru PMDR-90-99	0 thru 9 thru 90 thru 99	8.0	2.4	10	1	10			
PMDR-0 thru PMDR-9	0 thru 9				10	100			
PMDR-A thru PMDR-Z	A thru Z				10	100			
PMDR-L1 thru PMDR-L3	L1 thru L3				10	100			
PMDR-T1 thru PMDR-T3	T1 thru T3				10	100			
PMDR-GRS	Ground symbol				8.0	2.4	10	10	100
PMDR-MIN	Minus symbol							10	100
PMDR-PLS	Plus symbol							10	100
PMDR-BLK	Black							10	100
PMDR-BL	Light Blue							10	100
PMDR-BRN	Brown	10	100						
PMDR-GRN	Light Green	10	100						
PMDR-GRY	Gray	10	100						
PMDR-ORN	Orange	10	100						
PMDR-PUR	Purple	10	100						
PMDR-RED	Red	10	100						
PMDR-WHT	White	10	100						
PMDR-YEL	Yellow	10	100						
PMDR-NEMA	One of each of the NEMA colors featured above	1	1	10					

A. System Overview

B1. Cable Ties

B2. Cable Accessories

B3. Stainless Steel

C1. Wiring Duct

C2. Surface Raceway

C3. Abrasion Protection

C4. Cable Management

D1. Terminals

D2. Power & Grounding Connectors

E1. Labeling System

E2. Labels

E3. Pre-Printed & Write-On Markers

E4. Lockout/Tagout & Safety Solutions

F. Index

A. System Overview

Self-Laminating Wire Marker Dispenser

B1. Cable Ties

- Self-laminating labels are provided in handy dispenser which protects markers when not in use
- Clear section of marker overlaminates and protects write-on legend
- Quick, easy to use for smaller installations and maintenance

B2. Cable Accessories



Material Chart

Material	Print Method	Temperature Range	Features
Self-Laminating Vinyl, White Print-On	Pre-Printed	-40°F to 150°F (-40°C to 66°C)	Indoor/outdoor rated; thin and conformable; preferred material for most general wire/cable labeling.

B3. Stainless Steel

C1. Wiring Duct

Part Number	Part Description	Width		Length		Print-On Height		Min. Cable O.D.		Max. Cable O.D.		Std. Pkg. Qty.	Std. Ctn. Qty.
		In.	mm	In.	mm	In.	mm	In.	mm	In.	mm		
Dispenser Kit													
S100X125VARY	(1) Dispenser. (1) Roll, white write-on, vinyl label, 200/roll. (1) PFX-0 pen.	1.00	25.40	1.25	31.75	.38	9.65	.12	3.07	.28	7.03	1	10
S100X225VARY	(1) Dispenser. (1) Roll, white write-on, vinyl label, 100/roll. (1) PFX-0 pen.	1.00	25.40	2.25	57.15	.75	19.05	.24	6.06	.48	12.13	1	10

C2. Surface Raceway

C3. Abrasion Protection

C4. Cable Management

Refill Rolls

S100X125VAFY	White write-on, vinyl label, 200/roll.	1.00	25.40	1.25	31.75	.38	9.65	.12	3.07	.28	7.03	1	10
S100X225VAFY	White write-on, vinyl label 100/roll.	1.00	25.40	2.25	57.15	.75	19.05	.24	6.06	.48	12.13	1	10

Can be clearly identified with *PANDUIT* permanent marking pens shown on [page B1.48](#).

D1. Terminals

D2. Power & Grounding Connectors

E1. Labeling System

E2. Labels

E3. Pre-Printed & Write-On Markers

E4. Lockout/Tagout & Safety Solutions

F. Index

Pre-Printed Clip-On Wire Markers

- Non-adhesive markers grip tightly to wire/cable
- Markers supplied on application wand tool
- Chevron cut keeps multiple markers aligned
- Black legend is embossed into wire marker clip



Material Chart

Material	Print Method	Temperature Range	Features
Non-Adhesive Acetal	Pre-Printed	-22°F to 194°F (-30°C to 90°C)	Indoor/outdoor rated; durable material that has excellent resiliency to oils and solvents.

Part Number	Legend	No. of Markers Per Wand	Markers Per Pkg.	Std. Pkg. Qty.	Std. Ctn. Qty.
-------------	--------	-------------------------	------------------	----------------	----------------

Wire/Cable Diameter .08" – .10" (2.00mm – 2.50mm)

PCA07-A thru PCA07-Z	A thru Z	30	300	1	10
PCA07-A-J	A-J			1	10
PCA07-K-T	K-T			1	10
PCA07-U-Z	U-Z			1	10
PCA07-0 thru PCA07-9	0 thru 9			1	10
PCA07-0-9	0-9			1	10
PCA07-MIN	—			1	10
PCA07-PLS	+			1	10

Wire/Cable Diameter .11" – .13" (2.80mm – 3.30mm)

PCA11-A thru PCA11-Z	A thru Z	30	300	1	10
PCA11-A-J	A-J			1	10
PCA11-K-T	K-T			1	10
PCA11-U-Z	U-Z			1	10
PCA11-0 thru PCA11-9	0 thru 9			1	10
PCA11-0-9	0-9			1	10
PCA11-MIN	—			1	10
PCA11-PLS	+			1	10

Wire/Cable Diameter .13" – .15" (3.30mm – 3.80mm)

PCA13-A thru PCA13-Z	A thru Z	30	300	1	10
PCA13-A-J	A-J			1	10
PCA13-K-T	K-T			1	10
PCA13-U-Z	U-Z			1	10
PCA13-0 thru PCA13-9	0 thru 9			1	10
PCA13-0-9	0-9			1	10
PCA13-MIN	—			1	10
PCA13-PLS	+			1	10

A. System Overview

B1. Cable Ties

B2. Cable Accessories

B3. Stainless Steel

C1. Wiring Duct

C2. Surface Raceway

C3. Abrasion Protection

C4. Cable Management

D1. Terminals

D2. Power & Grounding Connectors

E1. Labeling System

E2. Labels

E3. Pre-Printed & Write-On Markers

E4. Lockout/Tagout & Safety Solutions

F. Index

A. System Overview

Pre-Printed Clip-On Wire Markers (continued)

B1. Cable Ties

B2. Cable Accessories

B3. Stainless Steel

C1. Wiring Duct

C2. Surface Raceway

C3. Abrasion Protection

C4. Cable Management

D1. Terminals

D2. Power & Grounding Connectors

E1. Labeling System

E2. Labels

E3. Pre-Printed & Write-On Markers

E4. Lockout/Tagout & Safety Solutions

F. Index

Part Number	Legend	No. of Markers Per Wand	Markers Per Pkg.	Std. Pkg. Qty.	Std. Ctn. Qty.		
Wire/Cable Diameter .19" – .23" (4.80mm – 5.80mm)							
PCA18-A thru PCA18-Z	A thru Z	30	300	1	10		
PCA18-A-J	A-J			1	10		
PCA18-K-T	K-T			1	10		
PCA18-U-Z	U-Z			1	10		
PCA18-0 thru PCA18-9	0 thru 9			1	10		
PCA18-0-9	0-9			1	10		
PCA18-MIN	—			1	10		
PCA18-PLS	+			1	10		
Wire/Cable Diameter .23" – .37" (5.80mm – 9.40mm)							
PCA23-A thru PCA23-Z	A thru Z			20	60	1	10
PCA23-A-D	A-D	80	1		10		
PCA23-E-H	E-H		1		10		
PCA23-I-L	I-L		1		10		
PCA23-M-P	M-P		1		10		
PCA23-Q-T	Q-T		1		10		
PCA23-U-X	U-X		1		10		
PCA23-Y-Z	Y-Z, +, -	1	10				
PCA23-0 thru PCA23-9	0 thru 9	60	1		10		
PCA23-0-3	0-3	80	1		10		
PCA23-4-7	4-7		1	10			
PCA23-8-9	8, 9, +, -		1	10			
PCA23-MIN	—	60	1	10			
PCA23-PLS	+	60	1	10			